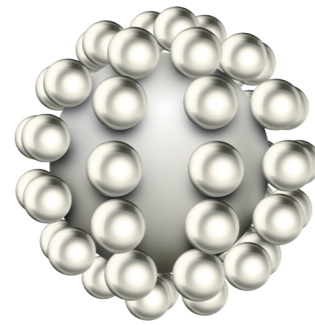


UNMATCHED AESTHETICS

EXPERIENCE LIFELIKE AESTHETIC RESULTS, OWING TO THE SPECIALLY CONTROLLED SIZE AND SHAPE AND CONFIGURATION OF HARMONIZE'S ART NANOPARTICLES:

- LIGHT DIFFUSION AND REFLECTION SIMILAR TO HUMAN ENAMEL.
- AN ENHANCED CHAMELEON EFFECT FOR BETTER BLENDING.

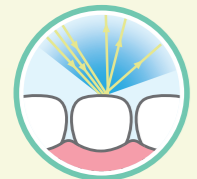


2^{OUT} OF 3 DOCTORS REPORTED HARMONIZE TO HAVE SUPERIOR OVERALL AESTHETIC PROPERTIES COMPARED TO THEIR CURRENT COMPOSITE²

² 19 out of 27 Leading EU Dentists
Harmonize Field Evaluation EMEA Sept 2016

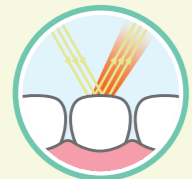
LIGHT REFLECTION LIKE A NATURAL TOOTH

LOWER WAVELENGTHS
- BLUE COLOUR -



DIFFUSE REFLECTION

HIGHER WAVELENGTHS
- RED COLOUR -



SPECULAR REFLECTION

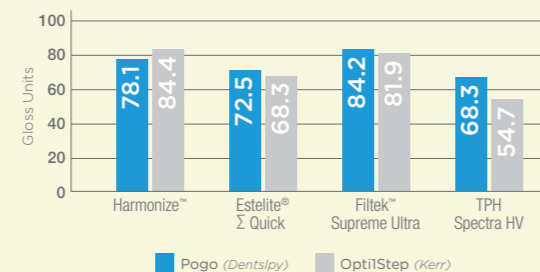
JUST LIKE A NATURAL HUMAN TOOTH, AND UNLIKE OTHER UNIVERSAL COMPOSITES, HARMONIZE ADAPTS TO THE LIGHT WAVELENGTH BY REFLECTING DIFFUSE LIGHT AT LOWER WAVELENGTHS AND SPECULAR LIGHT AT HIGHER WAVELENGTHS.

THIS RESULTS IN **BETTER BLENDING** THAN LEADING COMPOSITES, SUCH AS FILETEK SUPREME ULTRA. (internal data available upon request).

HIGH GLOSS AND CONSISTENT POLISH

THE PARTICLE SIZE AND STRUCTURE ALSO OFFER **EASIER POLISHABILITY**, AND, WHEN USED WITH OPTI1STEP POLISHER, HAVE DEMONSTRATED BETTER AND MORE CONSISTENT RESULTS THAN THE COMPETITION.

THEY ARE ALSO DESIGNED FOR **SUPERIOR GLOSS RETENTION**, EVEN WHEN COMPARED TO LEADING COMPOSITES SUCH AS TPH SPECTRA, GRANDIOSO AND TETRIC EVOCERAM.¹



¹ Study conducted at University of Alabama, 2016.

GET READY TO ELEVATE YOUR ARTISTRY

Harmonize - Syringe Trial Kit

CONTENTS: 4x 2g Syringe (1x Dentine A3, 1x Dentine A3.5, 1x Enamel A2, 1x Enamel A3); Instructions for Use.

Part No.	Description
36631	Harmonize - Syringe Trial Kit

Harmonize - Unidose Trial Kit

CONTENTS: 20x 0.25g Unidose (5x Dentine A3, 5x Dentine A3.5, 5x Enamel A2, 5x Enamel A3); Instructions for Use.

Part No.	Description
36632	Harmonize - Unidose Trial Kit

Harmonize - Refills

Shade	1x 4g Syringe	20x 0.25g Unidose
Dentine A1	36545	36571
Dentine A2	36536	36572
Dentine A3	36546	36573
Dentine A3.5	36547	36574
Dentine A4	36548	36575
Dentine B3	36549	36576
Dentine C4	36550	36577
Dentine XL2	36551	36578
Enamel A1	36552	36579
Enamel A2	36537	36542
Enamel A3	36553	36581
Enamel A3.5	36554	36582
Enamel A4	36555	36583
Enamel B1	36556	36584
Enamel B2	36557	36585
Enamel B3	36558	36586
Enamel B4	36559	36587
Enamel C1	36560	36588
Enamel C2	36561	36589
Enamel C3	36562	36590
Enamel C4	36563	36591
Enamel D2	36564	36592
Enamel D3	36565	36593
Enamel D4	36566	36594
Enamel XL	36567	36595
Incisal Translucent Amber	36538	36543
Incisal Translucent Blue	36568	36597
Incisal Translucent Clear	36569	36598
Incisal Translucent Gray	36570	36599
Incisal Translucent SuperClear*	36539	Not Available

* 3g Syringe

Harmonize - Syringe Intro Kit

CONTENTS: 4x 4g Syringe (1x Dentine A3, 1x Dentine A3.5, 1x Enamel A2, 1x Enamel A3); Instructions for Use.

Part No.	Description
36633	Harmonize - Syringe Intro Kit

Harmonize - Unidose Intro Kit

CONTENTS: 40x 0.25g Unidose (10x Dentine A3, 10x Dentine A3.5, 10x Enamel A2, 10x Enamel A3); Instructions for Use.

Part No.	Description
36634	Harmonize - Unidose Intro Kit

Harmonize - Syringe Advanced Kit

CONTENTS: 8x 4g Syringe (1x Dentine A3, 1x Dentine A3.5, 1x Dentine A4, 1x Enamel A2, 1x Enamel A3, 1x Enamel A4, 1x Incisal Clear, 1x Incisal Gray); Instructions for Use.

Part No.	Description
36635	Harmonize - Syringe Advanced Kit

Harmonize - Unidose Advanced Kit

CONTENTS: 80x 0.25g Unidose (10x Dentine A3, 10x Dentine A3.5, 10x Dentine A4, 10x Enamel A2, 10x Enamel A3, 10x Enamel A4, 10x Incisal Clear, 10x Incisal Gray); Instructions for Use.

Part No.	Description
36636	Harmonize - Unidose Advanced Kit

Harmonize, Herculite and Opti1Step are either registered trademarks or trademarks of Kerr Corporation in the United States and/or other countries. All other trademarks are property of their respective owners.

Harmonize™
Nanohybrid Universal Composite



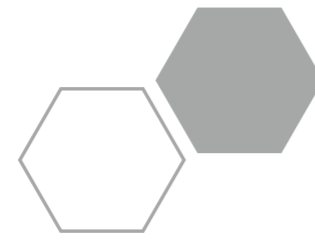
EXPERIENCE THE NEXT GENERATION
COMPOSITE THAT ELEVATES YOUR
A R T I S T R Y



LIFELIKE RESTORATIONS NEED YOUR TOUCH AND ART

HARMONIZE™ BEGINS WITH **ART, ADAPTIVE RESPONSE TECHNOLOGY**, A NANOPARTICLE FILLER NETWORK THAT MAKES ACHIEVING **LIFELIKE RESTORATIONS** EASIER THAN EVER BEFORE.

ART ALSO ENABLES **BETTER BLENDING CAPABILITIES** AND **ENHANCED STRUCTURAL INTEGRITY**, PROVIDING YOUR RESTORATIONS WITH EXCEPTIONAL STRENGTH AND UNMATCHED AESTHETICS.



EASIER HANDLING

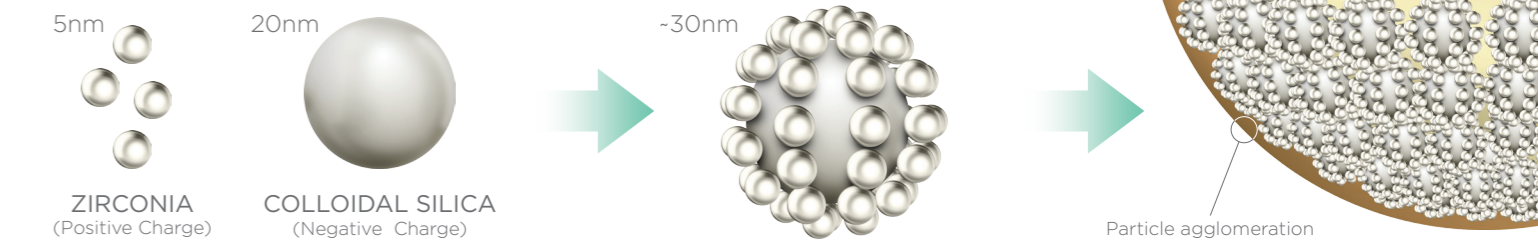
FEEL AN EASIER WAY TO CARVE THE ANATOMY OF YOUR COMPOSITE, FROM THE COMBINATION OF HARMONIZE'S UNIQUE, SPHERICAL **ART** NANOPARTICLES, AND A PATENTED RHEOLOGICAL MODIFIER:

- **ADAPTIVE VISCOSITY DURING THE APPLICATION**, DEPENDING ON THE PRESSURE APPLIED WITH THE INSTRUMENT.
- **MINIMISED STICKINESS WITH NO SLUMPING**, NO REWORK IS NECESSARY.

EXCEPTIONAL STRENGTH

COUNT ON DURABLE RESTORATIONS, THANKS TO THE **REINFORCED FILLER NETWORK** CREATED BY THE INTERACTION OF HARMONIZE'S ART NANOPARTICLES

- **INCREASED STRENGTH**, OWING TO THE HIGH FILLER LOAD (81% BY LOAD).
- **STRONGER BOND BETWEEN RESIN AND FILLER**, PROVIDING A LASTING PERFORMANCE.



SCIENCE AND BEAUTY COMING TOGETHER AT LAST.

94% OF LEADING US DENTISTS RATED **HARMONIZE** EXCELLENT IN HANDLING³

² 18 out of 27 Leading EU Dentists - Harmonize Field Evaluation EMEA Sept 2016

³ In a blind evaluation, 94% of leading US dentists stated Harmonize had excellent handling characteristics including stickiness, carvability, spreadability, and viscosity.

2 out of 3 DOCTORS WOULD CONSIDER SWITCHING FROM THEIR CURRENT COMPOSITE TO **HARMONIZE**¹



¹ 18 out of 27 Leading EU Dentists - Harmonize Field Evaluation EMEA Sept. 2016

DYNAMIC VISCOSITY

THE ART NANOPARTICLE FILLER NETWORK **ADAPTS TO THE CLINICIAN'S BEHAVIOUR**:

THE EXCLUSIVE **RHEOLOGICAL MODIFIER** IMPROVES FLOWABILITY WHILE SCULPTING, MAKING IT **EASY TO SHAPE THE COMPOSITE**.

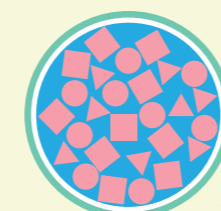
WHEN SCULPTING IS COMPLETE, THE VISCOSITY INCREASES, **PREVENTING THE MATERIAL FROM SLUMPING**.

ALL THIS MINIMISES EFFORT TO REACH THE DESIRED FORM, REDUCING THE TIME REQUIRED FOR TRIMMING AND FINISHING. (internal data available upon request).

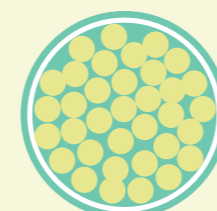
SPHERICAL SHAPE

THE SPHERICAL SHAPE OF THE ART FILLER NETWORK IS CAREFULLY CONTROLLED TO MAXIMISE LOADING, **MINIMISING STICKINESS AND SIMPLIFYING CARVING**.

THIS REDUCES THE RISK OF PULLBACK AND CAVOSURFACE VOIDS



COMPETITOR



HARMONIZE

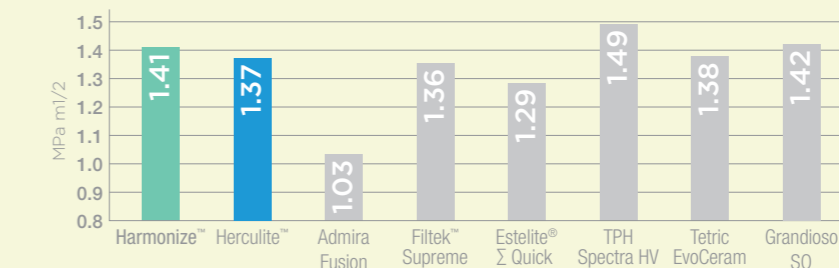
REINFORCED FILLER STRUCTURE

VERY SMALL SPHERICAL SILICA AND ZIRCONIA PARTICLES ARE LINKED TOGETHER AND FUSED IN A REINFORCED STRUCTURE.

THIS IMPROVES THE INTERACTION AND CROSSLINKING BETWEEN THE FILLER NETWORK AND THE RESIN MATRIX, RESULTING IN **MORE EFFICIENT POLYMERISATION AND HIGHER STRENGTH**. AS A RESULT, YOU CAN RELY ON LONGER LASTING RESTORATIONS, MORE LIKELY TO **RESIST CHIPPING AND FRACTURES OVER TIME**.

PROVEN MECHANICAL STRENGTH

HARMONIZE DEMONSTRATES **SUPERIOR STRENGTH** TO FILTEK SUPREME ULTRA, TETRIC EVOCERAM, ESTELITE SIGMA QUICK AND ADMIRA FUSION.



(Internal data on file.)

²Study conducted at University of Alabama, 2016.